

What's Happening

August 11 National Safe Digging Day



August is Back-to-School Safety Month

August is designated as Back-to-School Safety Month as a reminder to motorists to be extra careful at all times, especially as schools start up again in late August and early September.

September 2 Labor Day REC Offices Closed

Rock Energy Cooperative

P.O. Box 1758
2815 Kennedy Rd.
Janesville, WI 53547-1758

P.O. Box 126
15229 Willowbrook Rd.
South Beloit, IL 61080

(866) 752-4550

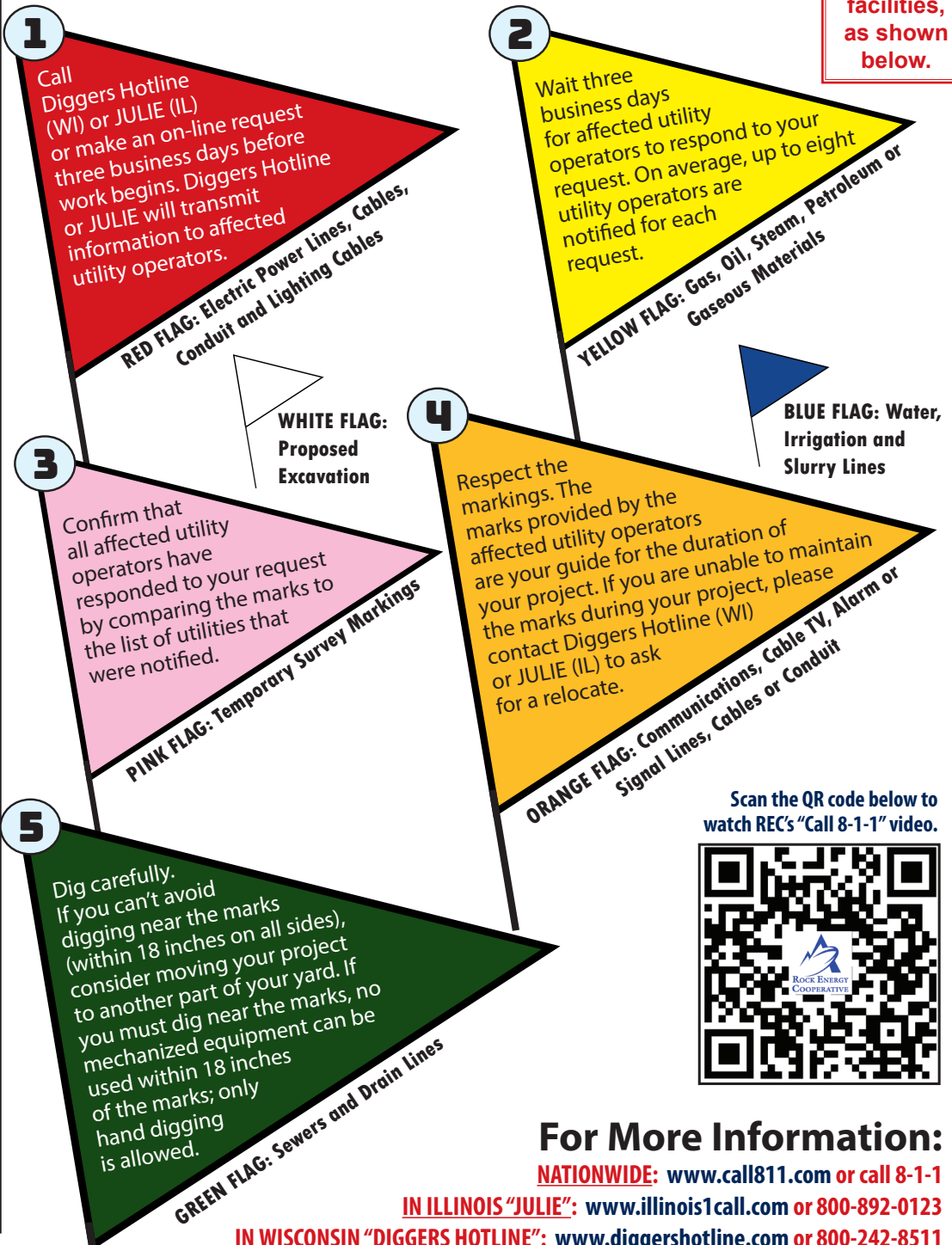
Shane Larson
Chief Executive Officer

Jonas Berberich
Editor

Call 8-1-1 Before You Dig

Careless digging poses a threat to people, pipelines and underground facilities. Always call 8-1-1 BEFORE you start digging, that way you will know what's underground and where it is. August 11 (8/11) is National Safe Digging Day, so Rock Energy would like to take this opportunity to remind you of the following steps that will help you complete your digging project as safely as possible:

NOTE:
Flags or paint in different colors denote designated facilities, as shown below.



Scan the QR code below to watch REC's "Call 8-1-1" video.



For More Information:

NATIONWIDE: www.call811.com or call 8-1-1

IN ILLINOIS "JULIE": www.illinois1call.com or 800-892-0123

IN WISCONSIN "DIGGERS HOTLINE": www.diggershotline.com or 800-242-8511

GAS GRILL SAFETY TIPS

✓ Keep grills 10 feet away from other objects.

✓ Keep gas grills outside. Indoors, they're a fire hazard.

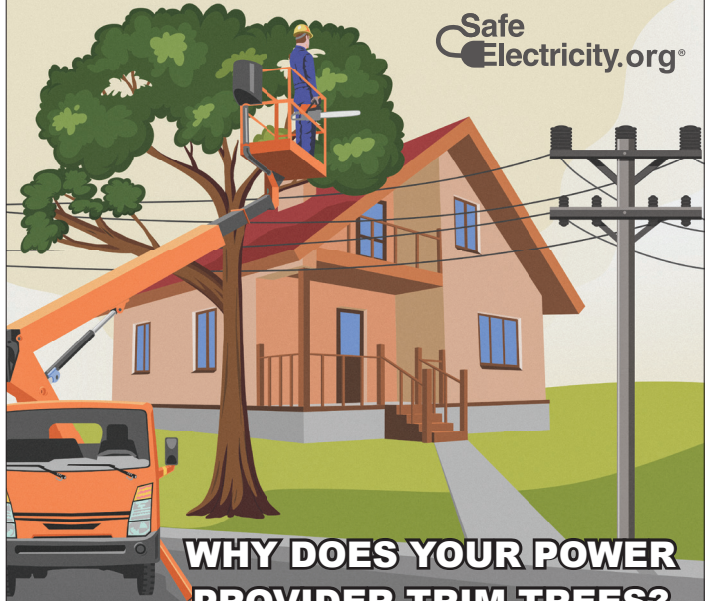
✓ Check the connection between the propane tank or natural gas line to be sure it's working properly and not leaking.



Rock Energy Cooperative recently presented a Community Safety Grant to Lakeside Fire-Rescue in Edgerton, WI. The grant funds are being used for new ambulance restraint devices designed for people between 4 – 99 pounds. Pictured above (from left to right): Todd Thompson (Rock Energy Board Member), Jeremy Parker, (Division Chief), Tailla Hoard (Paramedic/Firefighter), Sage (on stretcher), Cindy Kirby (EMS Captain), Barb Miller (Rock Energy Board Member/Vice-Chair), Cory Feggstad (LT./EMT), and Drew Mortimer (LT./EMT).

TREES – TOO CLOSE FOR (YOUR) COMFORT TREES CAUSE MAJORITY OF POWER OUTAGES

Safe Electricity.org®



WHY DOES YOUR POWER PROVIDER TRIM TREES?

Trees can grow into or crowd power lines, poles or other utility equipment and cause service issues. Overgrown trees can:

Proper pruning techniques are used to preserve tree health, although sometimes a tree must be removed if there are:

- ⚠ Cause outages.
 - 🔥 Create fire hazards.
 - 🔪 Break off and land on power lines.
 - ⚡ Cause lights to flicker during high winds.
 - ❄️ Get weighed down with ice and cause issues.
 - 🌳 Fast-growing trees directly under power lines.
 - 🌳 Trees that are leaning into lines.
 - 🌳 Trees that are declining, cracked or split.
- Unobstructed power lines make it easier and safer for utility crews to repair or service lines.

✓ Power companies trim trees to better serve you.

If you have any questions about why Rock Energy might need to work on your property, contact us at 866-752-4550.

REC OFFICES CLOSED FOR LABOR DAY

Rock Energy offices will be closed and Rock Energy personnel will be out on Monday, Sept. 2, in observance of Labor Day. Offices will be back open on Tuesday, Sept. 3. Members can make payments in the drop boxes at both offices on Labor Day and at the payment kiosk outside our South Beloit office, 15229 Willowbrook Road. Even though our offices are closed, standby crews are available. If you need to report a power outage or a natural gas incident, please call 866-752-4550.

HAPPY LABOR DAY

